



**KISIMANI
HEIGHTS**
MOMBASA

FAIRDEAL
PROPERTIES

**READY TO
MOVE IN**

Your ideal
Investment



SHOW HOUSE IMAGES



INTRODUCTION

Kisimani Heights the newest project by Fairdeal Properties, is conveniently located in a serene environment, right in the heart of Kisimani. It is a 10 storey, residential cum commercial building. The vision behind Kisimani Heights is to cater to everyone's housing needs.

It is made of studio, 1,2 3 BR apartments and also duplexes.

It is the right choice for people looking to buy as an investment option and also as a personal home

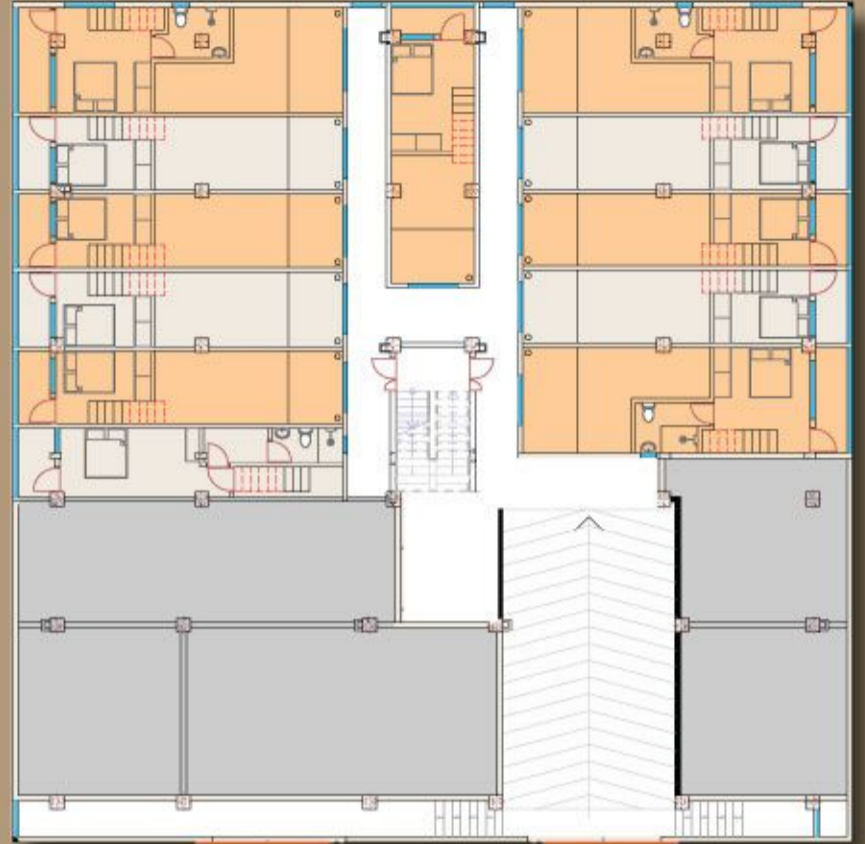
Kisimani Heights is
Your ideal _____
Investment



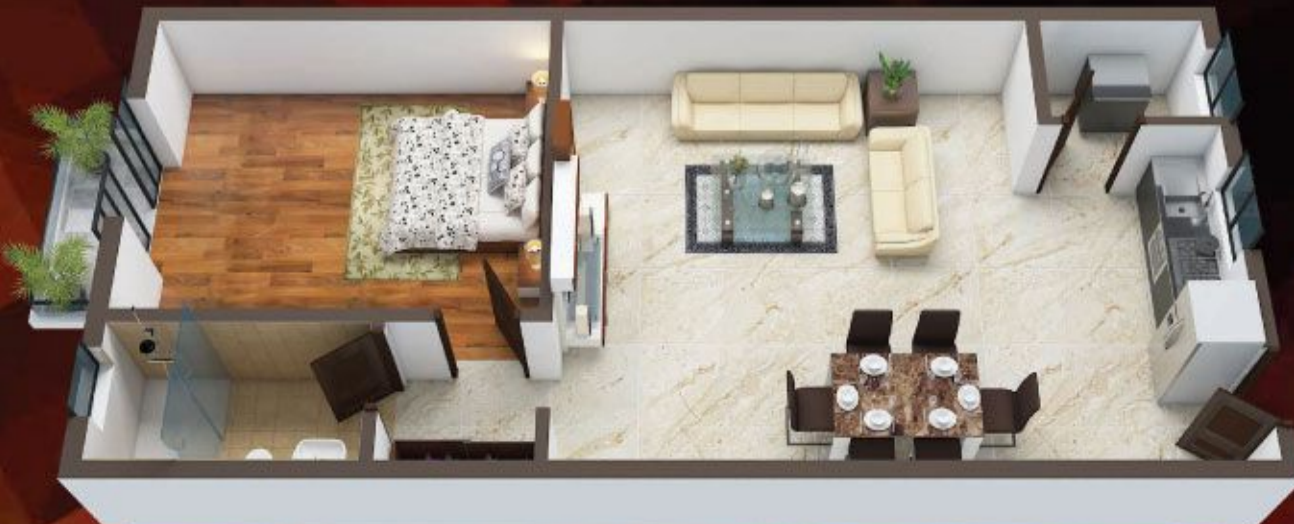
**MEZZANINE FLOOR
DUPLEX APARTMENT
LOWER LEVEL**



**MEZZANINE FLOOR
DUPLEX APARTMENT
UPPER LEVEL**



**STUDIO
APARTMENT**



**1 BEDROOM
APARTMENT**

AMENITIES

- Roof-top swimming pool
- Children play area
- Gym
- Commercial ground floor shops.
- Built in wardrobe in bedrooms
- Built in kitchen cabinets
- Upvc windows
- Wooden main door
- Internal flush doors
- Bore hole
- Security facilitation
- Lift & staircase
- Perimeter wall and security fencing
- Back-up generator for common areas
- Electricity cables and switches
- Vitrified tiled floor throughout
- Designer tiles for walls and floor
- Universal sanitary ware, fittings & accessories
- Ms railing in balcony.



**2 BEDROOM
APARTMENT**











**3 BEDROOM
APARTMENT**



All image for are illustrative purpose only. Actual product may differ.

The residents enjoy many excellent amenities in this project which are ideal for investment. They include the following:

FEATURES

-  Located strategically in a peaceful & green environment.
-  2 way access to the project via – mombasa malindi road and mary joy school road.
-  Church and mosque at a walking distance.
-  Public beaches at a short driving distance of 15 minutes.
-  Promising commercial area and residential developments happening around.
-  Easy access to public transport and connection to prominent shopping centres.
-  Playing ground nearby to project location
-  Quality construction by experienced contracting firm.
-  Great potential for appreciation of property value.



All image for are illustrative purpose only. Actual product may differ.

4th to 9th FLOOR PLAN



Site Location



CONTACT US

Mombasa address:

3rd floor, Fairdeal Plaza, Msa-Mld Highway
P.O.Box 91045-80103, Mombasa
Tel: +254 780 447 447
Tel: +254 782 005 000

Nairobi Address:

Kellico Complex,
Mombasa Road
Tel: +254 771 100 111
Tel: +254 777 100 050

 sales@fairdealproperties.biz

 www.properties.fairdeal.co.ke

 @fairdealpropertieske

 @FDILproperties

 @fairdeal.properties.kenya



Developed and Marketed By



Disclaimer: "Information provided herein has been obtained from reliable sources, but may be subject to errors, omissions, change of price, prior sale, or withdrawal without notice. The company, its employees, or its affiliates are not legally liable for any such discrepancies as mentioned above."